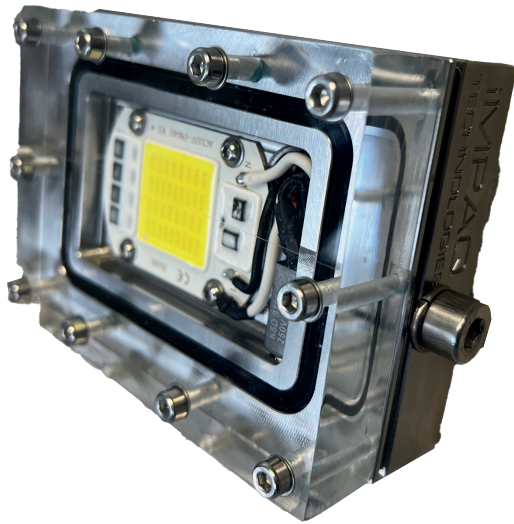


LitePAQ
SUBSEA LIGHTS

SL50 LED LIGHT

The SL50 LED Light is part of the LitePaq range of high-power LED underwater lights designed for operation in the demanding subsea environment where reliability and low lifetime cost of ownership is the most important factor.

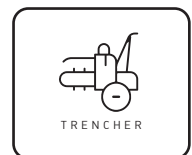
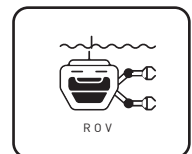


FEATURES AND BENEFITS

- ⚡ Various voltage, lumen, and colour options
- ⚡ Simple mounting
- ⚡ Highly robust
- ⚡ Low cost of ownership
- ⚡ Field serviceable
- ⚡ Ultraviolet option available
- ⚡ Bespoke design and build service offered

CONFIGURATIONS

| | |
|-----------------|---|
| SL50A3 | Square Light 50w 4,500/5,000lm, 6,500k. 110vAC -3000m |
| SL50D3 | Square Light 50w 4,500/5,000lm, 6,500k. 24vDC - 3000m |
| SL50UVD3 | Square Light 50w 24vDC UV365 LED – 3000m |



SPECIFICATION

| | |
|--------------------|--|
| Depth rating | Rated – 3,000m. 6,000m option |
| Housing | Marine grade 316 L stainless steel |
| Window | Perspex™ |
| Length | 115 mm |
| Width | 85 mm |
| Depth | 45 mm – 55 mm depending on depth rating |
| Weight | 1850 g in air and 800 g in water |
| Input voltage | Options 24V DC or 110V AC |
| Power consumption | 1.3 A (DC) 600ma (AC) |
| Lumen | 4,500-5,000lm |
| Colour temperature | 6,500k Other colours & UV available |
| Beam angle | 120 degrees |
| Dimming | Dimming available as an option using the LitePaq pod system launching soon |
| Connector | Standard hole size is 5/8 – 18 UNF & we can supply the lights with our 5507-1503/8 connectors fitted. Other sizes/connectors available |
| Ultra Violet | Ultra Violet option available |
| Rebuild kit | Includes a new window (to match depth rating), fasteners, o’ rings and a new LED to match the voltage/power of the light. |

Our in-house Lighting Specialists are able to design and build bespoke lighting solutions to suit your specific subsea equipment needs – please get in touch to discuss your requirements.